

RA LUMINAIRE

Ontero





Fresh, healthy, ecological, energy-efficient – our lifestyles and standards are changing. The range of products on offer is becoming more complex, guidance and trust more important. We are constantly searching for new types of lighting technology and are consistently developing new presentation options. For our customers. And our customers' customers.

Fresh Light *for* Fresh Products.



Ontero RA

SURFACE-MOUNTED LUMINAIRE

Ontero RA is the perfect entry to the lighting worlds of BÄRO. With its clear, modern design the surface-mounted luminaire with conductor rail adapter epitomises a focus on the essentials. Depending on the intended use, the luminaire series offers three light distribution patterns (Flood, Medium and Spot) and three light colours (2,700, 3,000 and 4,000 K). Furthermore, a new LED lighting head made of cast aluminium ensures optimum heat management and a long service life. Ontero RA is easy to plan, easy to handle and particularly economical to purchase and operate – the perfect basis for effective and emotional presentations in the non-food sector.



Ontero RA

LED

COLOUR CODE	830	835	840
-------------	-----	-----	-----

Useful luminous flux 15 W [lm]	1,730	1,740	1,780
Useful luminous flux 28 W [lm]	2,990	3,030	3,080

LUMINAIRE

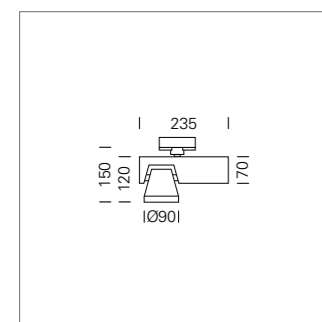
Weight	0.9 kg
Luminaire colours	■ □

> The figures specified apply to the version with a medium reflector.

Due to further developments in the field of LED technology, the system power may be reduced within the framework of product upgrades.

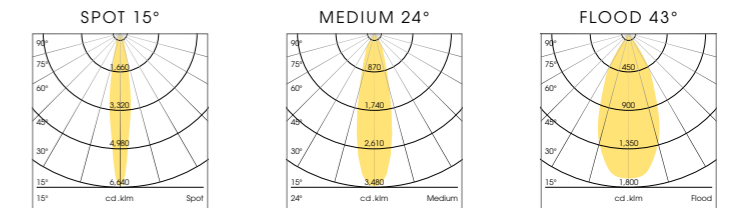


Surface-mounted spotlight with LED, passive cooling, rated lifetime of LED L80 / B10 > 50,000 h for 15 W and L70 / B10 > 50,000 h for 28 W, chromaticity point tolerance 3 SDCM (initial), reflector 99.99% pure aluminium in MIRO-SILVER®, pivoted emitter, adjustable luminaire head, die cast aluminium luminaire housing, powder-coated, multi-adapter, including glass cover, luminaire colours strato black/white, protection rating IP 20, protection class I, max. number of luminaires per circuit 34 pcs. / B16A



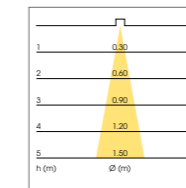
Light distribution patterns

Curves and diagrams



COLOUR CODE*	830	835	840
--------------	-----	-----	-----

Luminaire luminous flux [lm]	1,770 . 3,060	1,780 . 3,090	1,820 . 3,150
System power [W]	15 . 28	15 . 28	15 . 28
Illuminance [lx]			



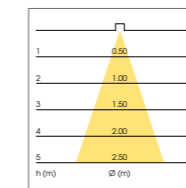
SPOT

Spot reflectors have a spot-type, clearly defined light distribution pattern. They produce high illuminances on a relatively small area and are predestined for accent lighting.

1	0.80	11,686 . 20,202	11,752 . 20,400	12,016 . 20,796
2	0.60	2,922 . 5,051	2,938 . 5,100	3,004 . 5,199
3	0.40	1,299 . 2,245	1,306 . 2,267	1,336 . 2,311
4	0.20	731 . 1,263	735 . 1,275	751 . 1,300
5	0.10	468 . 809	471 . 816	481 . 832

COLOUR CODE*	830	835	840
--------------	-----	-----	-----

Luminaire luminous flux [lm]	1,730 . 2,990	1,740 . 3,030	1,780 . 3,080
System power [W]	15 . 28	15 . 28	15 . 28
Illuminance [lx]			



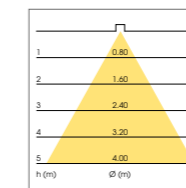
MEDIUM

Medium reflectors produce a saturated light distribution pattern with a soft diffuse cone. They are all-rounders that model the illuminated object with a perfect balance.

1	0.80	5,997 . 10,364	6,032 . 10,503	6,170 . 10,676
2	1.00	1,500 . 2,591	1,508 . 2,626	1,543 . 2,669
3	1.50	677 . 1,152	671 . 1,167	686 . 1,187
4	2.00	375 . 648	377 . 657	386 . 668
5	2.50	240 . 415	242 . 421	247 . 428

COLOUR CODE*	830	835	840
--------------	-----	-----	-----

Luminaire luminous flux [lm]	1,700 . 2,950	1,710 . 2,980	1,750 . 3,030
System power [W]	15 . 28	15 . 28	15 . 28
Illuminance [lx]			



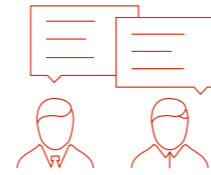
FLOOD

Flood reflectors have a wide and soft-edged light cone. They are suitable both for illuminating larger surfaces and for general lighting.

1	0.80	3,000 . 5,205	3,018 . 5,258	3,088 . 5,347
2	1.60	750 . 1,302	755 . 1,315	772 . 1,337
3	2.40	334 . 579	336 . 585	344 . 595
4	3.20	188 . 326	189 . 329	193 . 335
5	4.00	120 . 209	121 . 211	124 . 214

* Please refer to our data sheets at www.baero.com for information on colour rendering, rated lamp lifetime and further technical details. All data are typical values. System features may change with product improvements due to technical advances. Errors excepted.

BÄRO – Your lighting partner right from the start



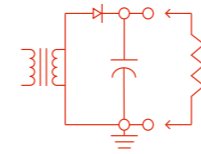
> ADVICE

A fundamental aspect of our advice is to convey to all those involved in the project the huge potential and the many nuanced possibilities of expression offered by the medium light today thanks to LED technology. Talk to our lighting consultants and find out about the impact that BÄRO products can have in your store – not just in view of effectiveness and efficiency, but also and especially in terms of the emotionality of light.



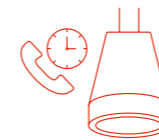
> PLANNING

Light can be designed in many different qualities and dimensions. Sophisticated light planning not only supports the dramaturgy of the shopping experience; it also allows the lighting to be perfectly tailored to the different visual tasks and product groups. We are committed to finding a customised, expressive light balance for every concept – through the interplay of light distribution and light channelling, light intensities and light colours.



> INSTALLATION

Careful and professional installation is just as important as effective and creative lighting planning. BÄRO supports you in the installation and alignment of luminaires on site – so that your customised lighting concept rapidly takes shape and unforeseen issues are quickly resolved. In this way you can be sure that the lighting is perfectly focused on the room and the products.



> SUPPORT

Our service does not end when your lighting system is put into operation. BÄRO is available for questions and services even after completion of the project – from subsequent adjustments to the concept that only become apparent during operation to straightforward assistance in the unlikely event of a defect. It is not without good reason that we give a 5-year LED guarantee on our products.

> CONTACT

Tel.: +49 (0)800 799 1000 / E-Mail: service@baero.com

Printed by:
Köllen Druck & Verlag GmbH

Concept and Art Direction:
Meiré und Meiré, Köln / Cologne
www.meireundmeire.de

Photography:
Hartmut Nägele
Kai Nielsen

BÄRO GmbH & Co. KG
Wolfstall 54-56
42799 Leichlingen

T +49 2174 799 0
F +49 2174 799 799
www.baero.com